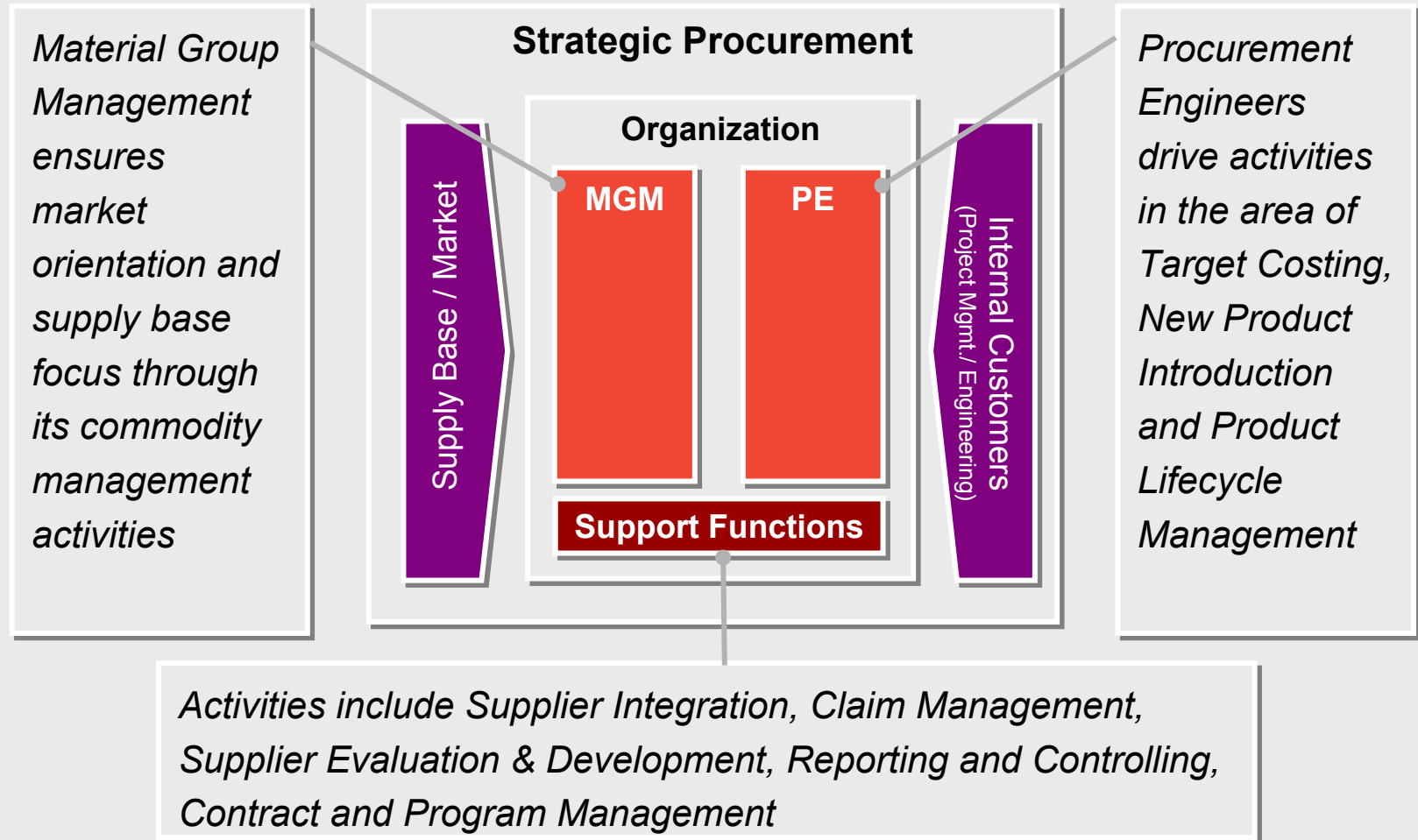


BenQ Mobile Group Strategic Procurement Organization

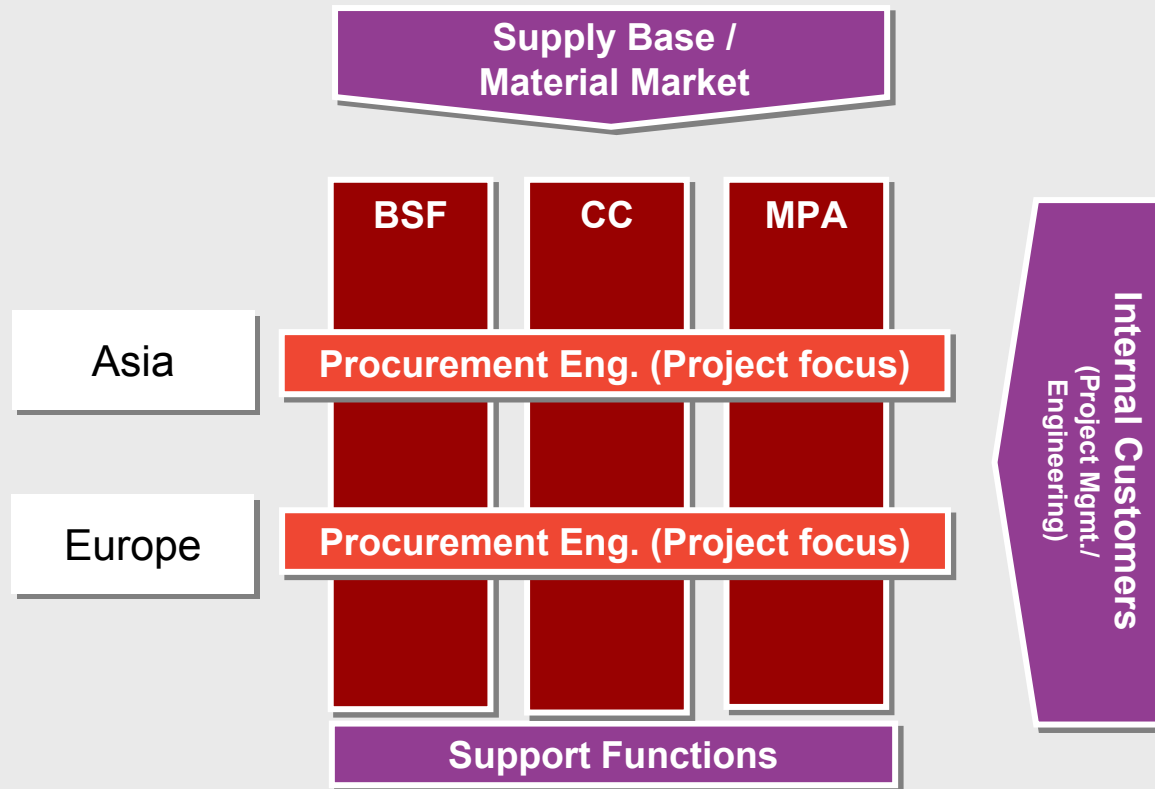
Florian Lissmann / Teresa Wu

14. December 2005

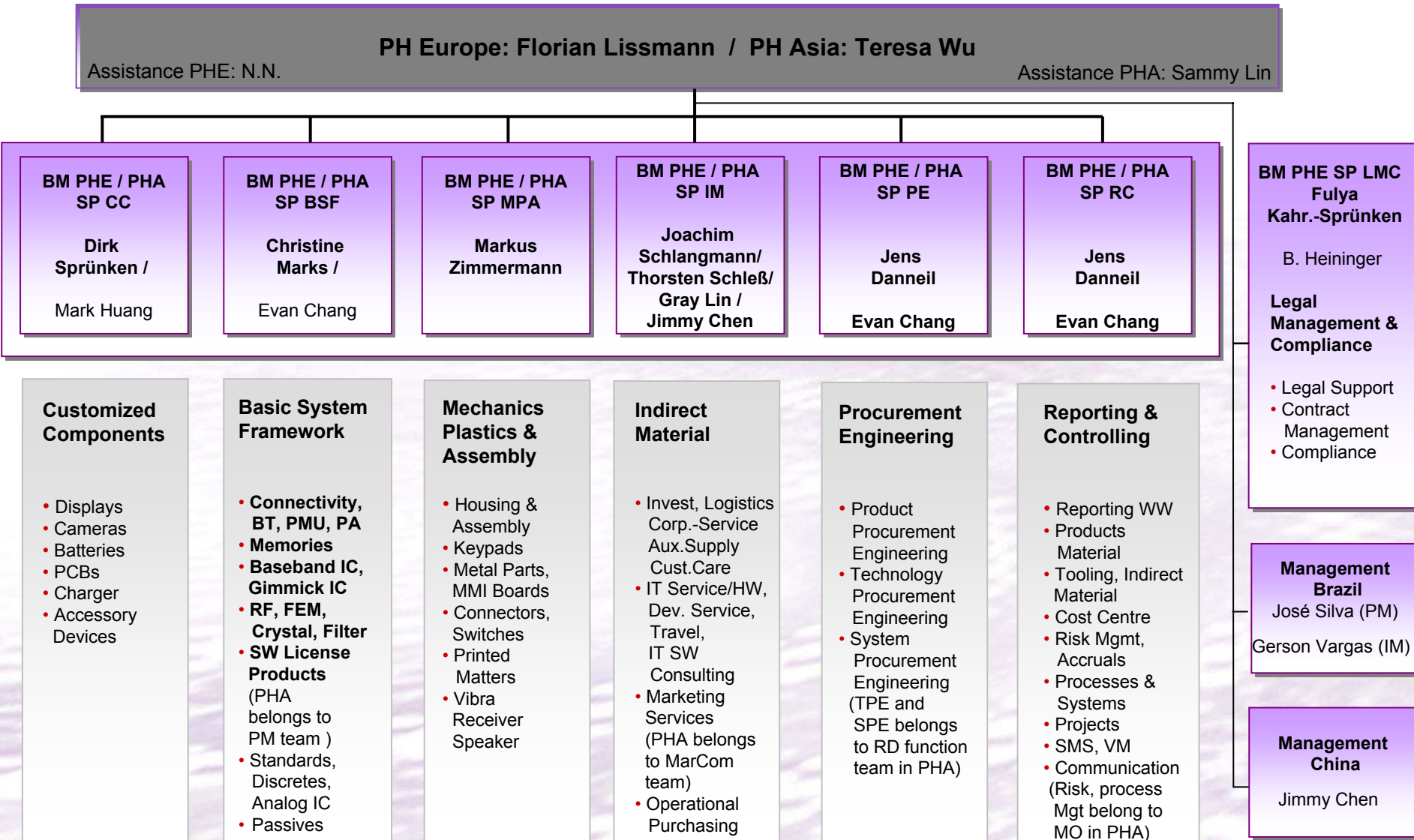
Strategic Procurement is based on 2 pillars: MGM and PE



Clear Material ownership (one face to the supplier) and clear BOM ownership is our key to success



The BM PHE / PHA SP Organization is global



BM PHE / PHA SP Customized Components Organization

PH Europe: Florian Lissmann / PH Asia: Teresa Wu

Dirk Spruenken

Backoffice: Karin Rother

Mark Huang

Display

Max Huang
PHA TPE

Emily Lin
PHE TPE

Camera

Samuel Chen
PHE / PHA TPE

Battery

Samuel Chen
PHA TPE

Magnus Michael
PHE KLF

PCB/FPC

Thisbe Tu (PCB)
PHE / PHA TPE

Max Huang (FPC)
PHE / PHA TPE

AD

Richard Hsieh
Sophia Chung
2x N.N.
PHE / PHA

Freddy Grubisa
Thomas Wagner
PHE MCH

Charger

Gaven Wang
PHE / PHA

Global Logistics Manager (BSF, CC, MPA): Juergen Kunz

Local Procurement (CC)

Sven Kohnen (ext.)
Fabia Souza

KLF
MAN

Sun Tang
Cheryl Cheng Wen Chen

SHA
SHA

BM PHE / PHA SP Basic System Framework Organization

PH Europe: Florian Lissmann / PH Asia: Teresa Wu

Christine Marks

Procurement Division Manager BM PHE SP BSF

Backoffice: Eveline Scheer

Evan Chang

Manager Sourcing Department BM PHA SP BSF

**Baseband IC
Gimmicks IC
Platform**

Wolfram Rickerts
KLF MGM
PGM for IFX and
Qualcomm
Platform KLF

Memories

Carsten Koeller
KLF MGM

**SW and License
Products**
Travis Galloway
MCH MGM

**SW and License
Products**
N.N.
MCH MGM

Discrete and Passive
Henry HJ Hsu

TPE

Analog and Logic

Maggie Y. Lin
TPE

TI Platform

Jinny Chen
TPE

**PMU,
Connectivity**

Ulrich Pleus
KLF MGM

**RF IC, FEM, PA
Crystal, Filter**

Andreas Schoen
(Jan 1st, 06)
KLF MGM

Thomas v.d. Heuysen (ext.)
Lily Bai
Bao Lei
Lyssia Tavares

KLF
SHA
SHA
MAN

LPM
LPM
LPM
LPM

BM PHE / PHA SP Mechanic, Plastics & Assembly Organization

PH Europe: Florian Lissmann / PH Asia: Teresa Wu

Markus Zimmermann
Procurement Division Manager
BM PHE/PHA SP MPA

Backoffice: Eveline Scheer

Oliver Arlt PGM - Function

Maike Krings MGM Housing & Assembly	KLF
Philipp Lutzny MGM Housing & Assembly	MCH (1.2.2006)
Susan Jungandreas MGM Housing & Assembly	KLF
Stefan Schulte-Kramer MGM Metal Parts	KLF (1.1.2006)

Marcel Devereaux PGM - Function

Dong Xia MGM Keypads	MCH
Ulrike Lauer MGM Connectors / Printed Matters	KLF
J. Y. Kim MGM Keypads	KLF
Liu Li Hua MGM Printed Matters / MMI / Metal Dome	SHA

Danny Lu China Procurement

Erik Kao MGM Housing & Assembly	TPE
Kaak Du MGM Keypads	TPE
Garry Chang MGM coonector/printing materials/shielding	TPE
Richard Hsieh MGM Acoustic / Vibra	TPE
Oliver Lin MGM Housing & Assembly	SHA
Ya Wei Xue MGM Housing & Assembly	SHA
N.N. MGM Keypads	SHA
Amity Zhou MGM Housing & Assembly	SHO
Kitty Lee MGM Keypads / connector	SHO

Wang Yong	SHA	LPM
Bao Lei	SHA	LPM
Cheryl Cheng Wen Chen	SHA	LPM
Fabio Guenka	MAN	LPM
Lyssia Tavares	MAN	LPM

Danny Lu / Oliver Arlt / Marcel co define supplier strategy for PHE / PHA
Rotation necessary among Oliver / Marcel / Danny

BM PHE SP Indirect Material Organization

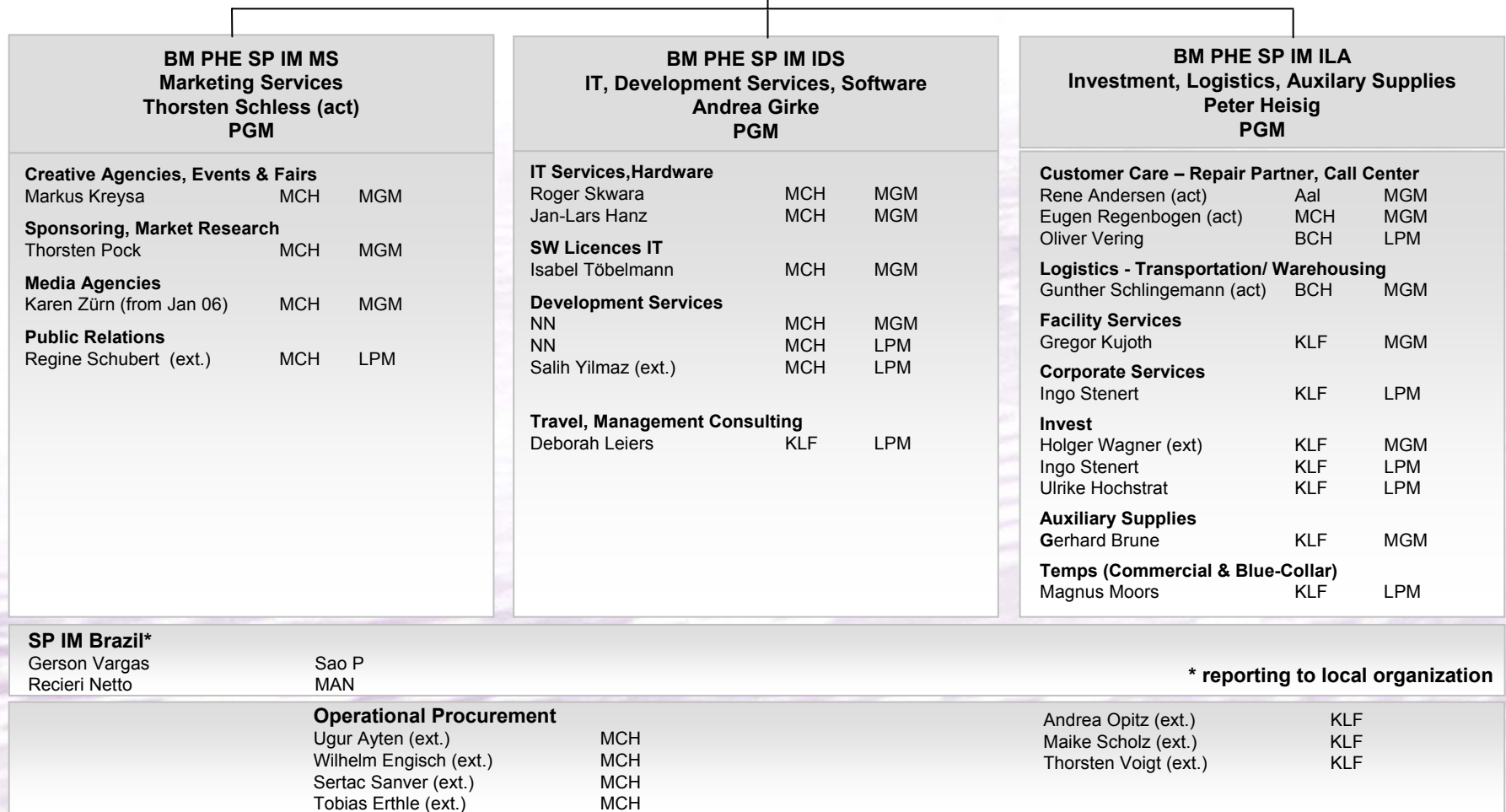
Joachim Schlangmann¹ / Thorsten Schließ²

¹ responsible Germany

² responsible World

Procurement Division Manager BM PHE SP IM

Backoffice: Karin Füsler (ext.)



* reporting to local organization

BM PHE SP Procurement Engineering Organization

Jens Danneil

Procurement Division Manager BM PHE SP PE

Backoffice: Annabella Kulk

BM PHE SP PE P Product Procurement Engineering Lutz Schiffgens PGM

Andreas Wipper	MCH	P-PE
Eric Chen	PEK	P-PE
Rodolphe Beaugnard	MCH	P-PE
N.N.	MCH	P-PE
Thomas Goerig	KLF	P-PE
Jörg Dunzel	BLN	P-PE
Robert Molgaard	AAL	P-PE
Mariann Svendsen	AAL	P-PE
Jamil Chaar	MAO	P-PE

System Procurement Engineering Jens Danneil

Product Definition		
Joachim Schlusche	KLF	S-PE
Platform, BSF		
Friedrich Janus	MCH	S-PE

Technology Procurement Engineering Jens Danneil

RF, DVB-H, Camera		
Jörg-Michael Green	MCH	T-PE
Battery/Connectivity/Sensors		
Andreas Möhl	MCH	T-PE
Display		
J.Y.Lee (1.Jan.2006)	MCH	T-PE

BM PHE SP Reporting & Controlling Organization

